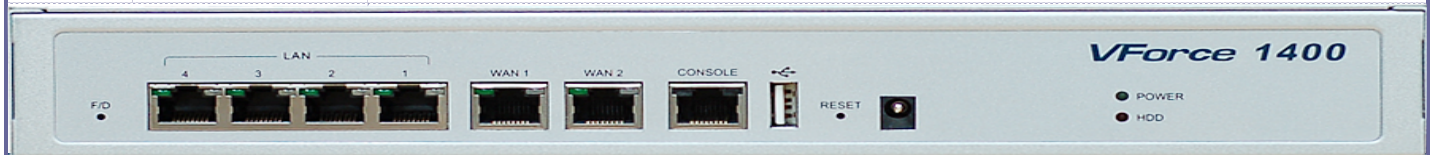




# VForce Series

## VF1406-V

Memory	512M
Compact Flash	1G
Interface	6 * 10/100/1000, Max 5 WAN ports / 1 * Console / 1 * USB
Power Input / Output	100~240V / 40W
Max Concurrent sessions	100,000
Max VPN Tunnel	1,000
VPN throughput	450M pbs
Firewall throughput	1.5 Gbps
Size(WDH)	322 x 184 x 44(1U)
List Price(USD)	5,100
Distributor price(USD)	2550
Over 100 units(USD)	1530



**Bonding / VPN / Firewall / QoS / Fail-over**

#### Firewall

- Packet Filter
- NAT/PAT(1:1, M:1, M:N)
- Transparent(Bridge)
- Routing(OSPF, RIP, Multicast)
- VLAN(802.1Q)
- Time based filtering
- Session limitation

#### VPN

- IPSEC(GW-GW)
- IKE v1(RFC2409)
- IKE v2(RFC4306)
- ESP(RFC2406)
- 3DES, AES, SEED
- AH(RFC2402)
- SHA1, MD5
- NAT
- Support Authentication certificate

#### VPN client

- IPsec compliant
- Supported platforms: 2000,XP,Vista

#### High Availability Clustering

- Active-Standby(VRRP)
- L3 Active-Active without L4 Switch
- Session Synchronization
- Configuration Synchronization

#### Bandwidth Management / QoS

- Guaranteed&Burstable bandwidth policy
- IP/Protocol based policy

#### Line Bonding

- Multiple connection bonding via line aggregation technology
- Bonded bandwidth reporting

#### Others

- Management mode: CLI/Web UI
- Authentication: Local/TACACS+

#### Compliance and Certificate

- CE/FCC, CC

#135-280, 5FL Seoul Academy B.D Daechi-Dong, Gangnam-Gu, Seoul Korea

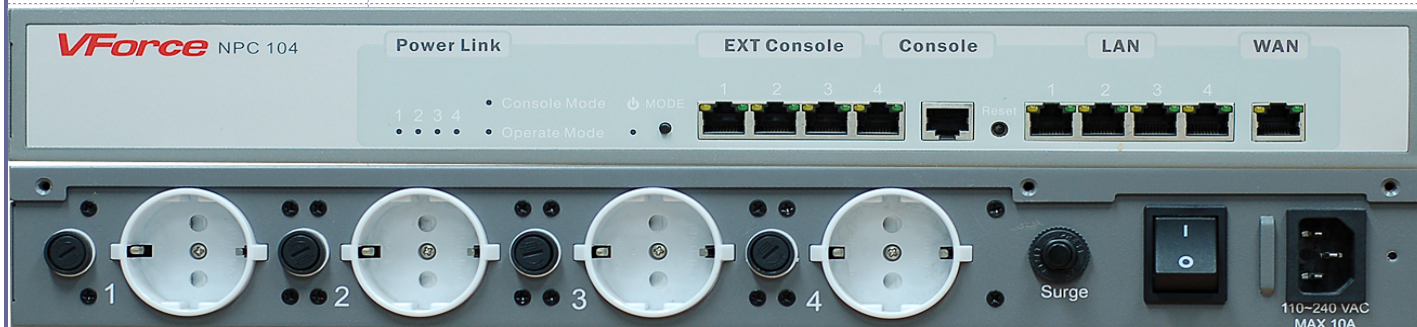
Tel: +82-2-2016-0812 / F ax: +82-2-571-8998 / Email: security@nexg.net / www.nexg.net



# VForce Series

## NPC104

Input	AC 110 V ~ 240 V Free Volt (50~60 Hz)
Output	~ AC250V / 10A
Interface	<b>10/100 LAN 4 Port *4</b> 10/100 WAN 1 Port: additional port to direct access for Internet
	EXT Console port * 4 / Console port * 1
Size	4 power socket 440 X 220 X 55 mm (WDH)
List Price(USD)	2,000
Distributor price(USD)	1000
Over 500 units(USD)	600



### Features

**Console Server:** Console Server with 4 Console port to manage up to 4 Equipment (Server, switches, router and etc) utilize secure communication connectivity

**Network Management:** 4 LAN Port providing Network connectivity and monitoring of Equipment attach to it

**Remote Power Management :** 4 Independent Socket with Remote power management capability to do Automatic/Manual reset.

**Management mode:** WEB / CLI / EMS / Remote Firmware upgrading

**Monitoring and reporting**

- Monitoring status of Network device via NMS
- Reporting reboot event and down-time, Status of connection

**Auto power management:** Auto reboot via checking ICMP. (SLA/TRACK)

**Over-current protector**

- Main power Max 10A: Switch type
- Each sockets 10A: Fuse type(replaceable)

#135-280, 5FL Seoul Academy B.D Daechi-Dong, Gangnam-Gu, Seoul Korea

Tel: +82-2-2016-0812 / F ax: +82-2-571-8998 / Email: security@nexg.net / www.nexg.net